

Continental

Refrigerator



Utilizing Environmentally Safe, CFC-free R-134a Refrigerant

BACK BAR DISPLAY COOLERS

Standard Features



BBC90-GD

MODELS AVAILABLE

- BBC50-GD
- BBC59-GD
- BBC69-GD
- BBC79-GD
- BBC90-GD

- Available in 50", 59", 69", 79", 90" Widths
- Modern, State-of-the-Art Styling
- Performance Rated Refrigeration System Utilizing Environmentally Safe R-134a Refrigerant
- Wear Resistant Black Vinyl Coated Steel Exterior with 304 Series Stainless Steel Countertop
- Heavy-Duty, Long Lasting, Galvanized Steel Interior with Reinforced Stainless Steel Floor
- Stainless Steel Reinforced Threshold Sills for Ease of Loading
- Cylinder Keyed Security Lock and Magnetic Snap-In Gasket on Each Door
- Full Length, Extra Large, Non-Corrosive, Plasticized Fin Evaporator Coil Provides Uniform Air Flow Distribution to Maintain Constant Product Temperature and Quick Uniform Recovery
- Heavy Duty, Adjustable and Epoxy-Coated Steel Shelves
- Easily Accessible and Serviceable Slide-Out Condensing Unit
- Readily Removable Front, Rear and Side Venting Louvered Grills Allow Greater Condenser Air Flow for Tight Fit Installations
- Fluorescent Interior Lighting
- Automatic, Energy Saving, Non-Electric Condensate Disposal
- High Density, Non-CFC Polyurethane Foamed-in-Place Insulation
- Double Pane, Tempered, Low-E Hinged Glass Doors

Optional Features & Accessories

- 6" Adjustable Legs
- SS Models – Stainless Steel Exterior, Galvanized Steel Interior
- Remote Models — R
- Step Compartment Shelf
- Additional Shelves
- Electric Condensate
- Heavy Duty Pilasters and Shelf Clips
- 4" Locking Casters



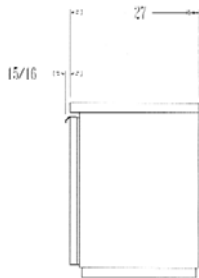


BACK BAR DISPLAY COOLERS

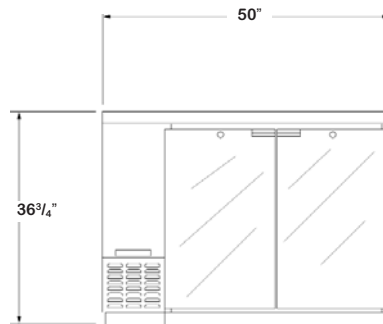
SPECIFICATIONS

DIMENSIONAL DATA

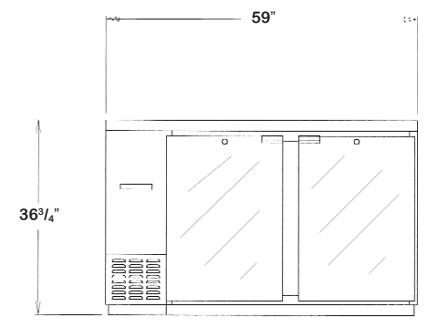
	Model BBC50-GD	Model BBC59-GD	Model BBC69-GD	Model BBC79-GD	Model BBC90-GD
Net Capacity (cu. ft.)	16	22	26	28	35
Barrel Capacity — (# of Barrel Type Kegs)	—	2	3	4	4
Straight Wall Capacity — (# of Straight Wall Kegs)	2	3	3	4	5
Width, Overall (in.)	50	59	69	79	90
Depth, Overall, (in.)	27	27	27	27	27
Height, Overall (in.)	36 ³ / ₄	36 ³ / ₄	36 ³ / ₄	36 ³ / ₄	36 ³ / ₄
Number of Doors	2	2	2	3	3
Number of Shelves	4	4	4	6	6
Condensing Unit Size (H.P.)	1/3	1/3	1/3	1/3	1/3
Refrigerant	R-134a	R-134a	R-134a	R-134a	R-134a
Cabinet Electrical Specs	115/60/1	115/60/1	115/60/1	115/60/1	115/60/1
Total Amps	9.6	9.6	10.3	10.3	13.3
Power Supply Cord (10 ft.)	YES	YES	YES	YES	YES
Shipping Weight (lbs.)	355	385	415	455	505
Shipping Height (in.)	46	46	46	46	46
Shipping Length (in.)	58	65	78	109	109
Shipping Depth (in.)	42	42	42	42	42



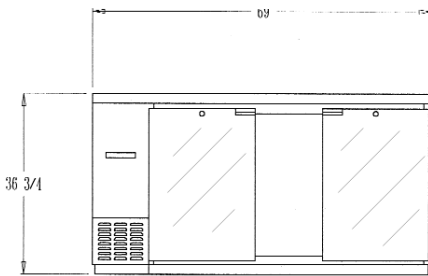
BBC50,59,69,79 & 90
SIDE VIEW



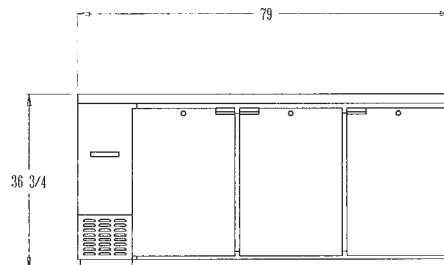
BBC50-GD FRONT VIEW



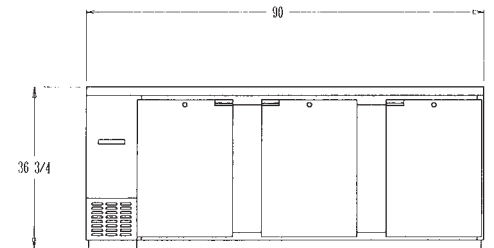
BBC59-GD FRONT VIEW



BBC69-GD FRONT VIEW



BBC79-GD FRONT VIEW



BBC90-GD FRONT VIEW

Continental
Refrigerator

A Division of National Refrigeration & A/C Products, Inc.
539 Dunksferry Road Bensalem, PA 19020
(800) 523-7138 Fax: (215) 244-9579
www.continentalrefrigerator.com

VLBBGD305